

Butterfly Extruder Cane



by Lynda Braunstein-Gilcher

Supplies

Sculpey Blade or other sharp blade to slice canes

Premo! Sculpey Polymer Clay 2oz - Black, White, Color for butterfly, white, translucent, or contrast color for background.

Clay Extruder (that is 3/4" inside diameter)

Butterfly Extruder Disk Set (<http://www.lyndagilcher.com/lgmain/>)

Ruler

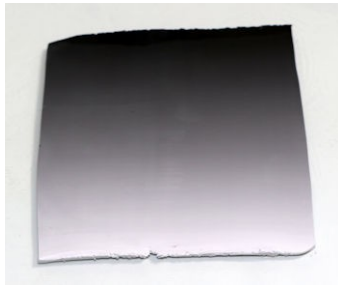
Pasta Machine

Optional Polka Dot Disk Set (or small square and round extruder disk)

Butterfly Extruder Cane by Lynda Braunstein-Gilcher

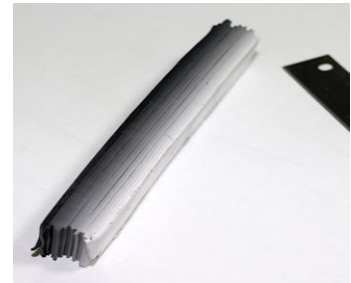
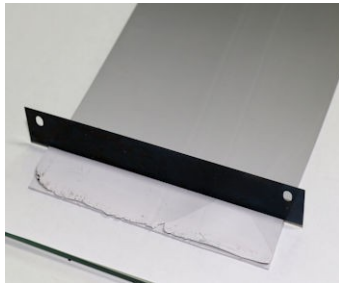
Step 1

Make a Skinner Blend using the full width of your pasta machine and contrasting colors of clay.



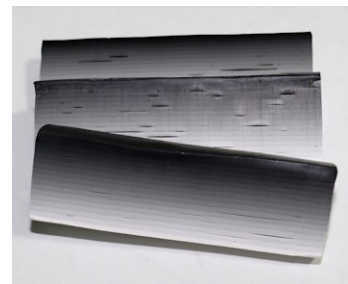
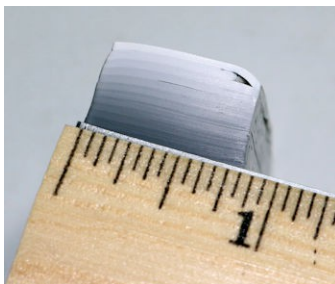
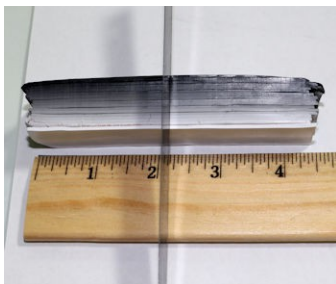
Step 2

Lengthen blend to medium (#4) setting, cut into 3/4" strips, and stack into a loaf.



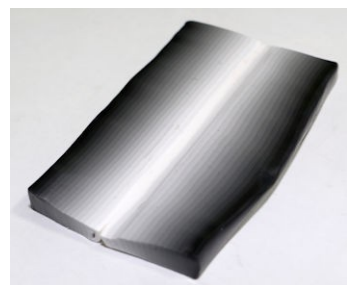
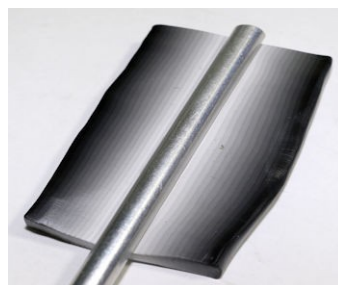
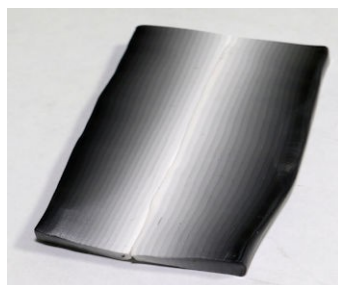
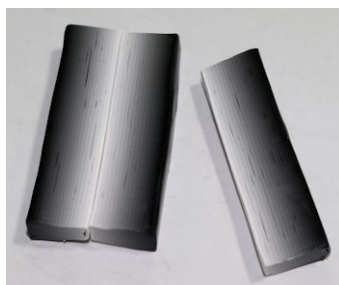
Step 3

Cut loaf in half, reduce to 3/4" square and slice into three 1/4" pieces.



Step 4

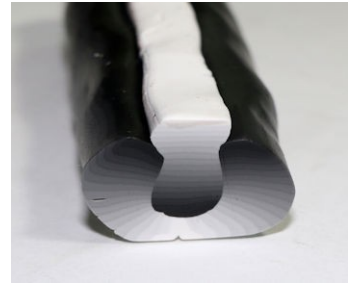
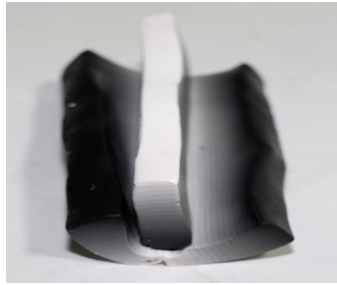
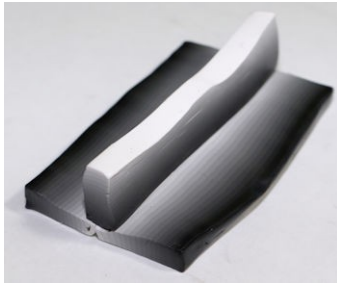
Match lighter color edges of two pieces and roll the seam together. Using needle tool or other small roller, indent the center of the sheet.



Butterfly Extruder Cane by Lynda Braunstein-Gilcher

Step 5

Set third piece with dark color edge into center of indentation and wrap sides up and around.



Step 6

Round out piece, reduce to 3/4" diameter, and cut butterfly center in half, at about 2" length.



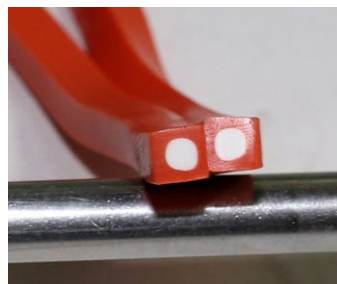
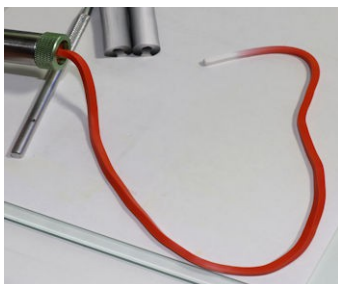
Step 7

Extrude 2" length of center dot color using 1/4" circle disk or roll out an even 1/4" size 'snake'. Wrap piece with medium (#3) setting sheet of contrasting color one layer at a time until 3/4" diameter to fit into extruder.



Step 8

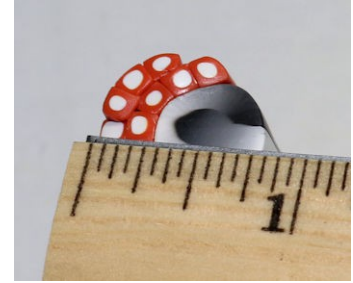
Extrude using small 4mm size square disk. Cut dots into same length as butterfly center (about 2" long) and line up into rows of six.



Butterfly Extruder Cane by Lynda Braunstein-Gilcher

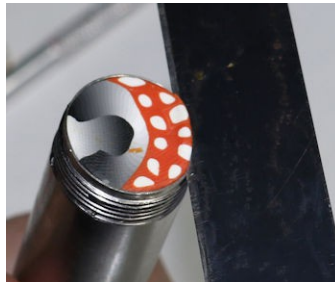
Step 9

Place a six-dot sheet around cane then add a five-dot layer to outside. Compress cane together so that it is 3/4" diameter to fit into the extruder. Cut in half (one for top, one for bottom).



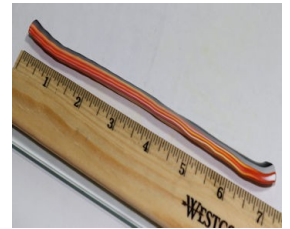
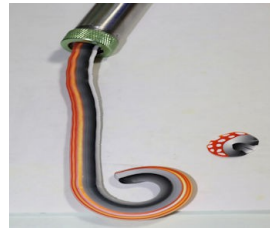
Step 10

Put your thumb over end of extruder and crank to compress the cane let it come out slightly. Use tissue blade to make clean slice across end of extruder.



Step 11

Position TOP butterfly wing disk so that the inner point of wing is at center of light color and the dot strips are at outside edge. Put extruder cap on watching that the disk doesn't turn. Extrude a strip. If it curls, you can easily straighten it.



Step 12

Load second piece (see step 11) and extrude BOTTOM wing aligning the inner and outer points the same as you did for the top wing. Cut both top and bottom wing in half. (I prefer to build these canes in 2" lengths. Cut two 2" pieces off each wing.)



Butterfly Extruder Cane by Lynda Braunstein-Gilcher

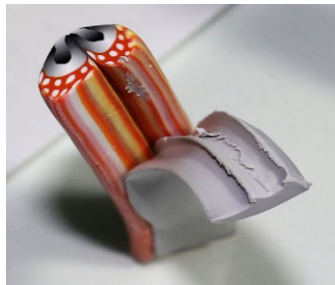
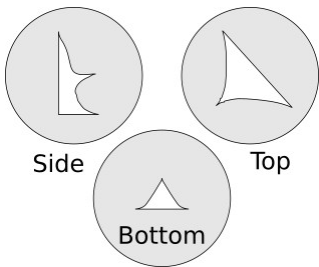
Step 13

Match top and bottom wing strips so they form a butterfly design. (Left and right wings)



Step 14

Choose a background color contrasting or white translucent. Use the other three disks to extrude filler pieces. Cut filler shapes to same length as the butterfly strips. Add the side filler shape to the top and bottom wing pieces making left and right halves. Add top and bottom filler shapes to finish putting the butterfly cane together.



Step 15

Roll out a medium (#3) sheet of background color and wrap it around outside of butterfly cane. Compress and reduce to desired scale. Note: If you are reducing, you may want to wrap with #1 thick outside wrap of background color. All ready to use in your projects!!

